



# L THE LONE STAR® SPECIAL™

*The stylistic momentum of the Lone Star® has been overwhelming.*

Players and reviewers alike have bestowed global accolades on this gem, including prestigious Editor's Pick and Platinum Awards.

"So ...why another Lone Star?" Because tone this good demands it!

Take that incredibly expressive pre-amp with its intuitive versatility, add the vintage magic of EL-84's running Pure Class A — and a new classic is born.

Where its Big Brother boasts the huge warmth and headroom of 6L6 power, the Special delivers seductive, bubbly tone and a sensual, elastic feel.

This Lone Star is short on weight but tall on personality.

Authentic retro-tone is all about power and the way it clips. Yet in any given amp, the sweet-spot of power clip is inseparably tied to its wattage and playing loudness. The Lone Star Special smashes this age-old limitation by offering three distinct power configurations,

each with its own window of wattage: 30, 15, or 5. Perfect Power. Per Channel. On Demand.

Thirty Watts, bold and pure from all four power tubes punches through the mix and hangs with a band in mid-size venues. Fifteen watts cries the blues with sinful passion ...coaxing expressive soul from an electron-soaked



# LONE STAR Special



pair of EL-84's. Both these circuits run Pure Class A in a Push-Pull configuration. But what really makes this Lone Star Special is its ability to switch down to five watts of single-ended power bliss, patent pending.

In Push-Pull circuits, the second harmonic is cancelled out when the two halves of the wave-form are re-combined in the output transformer. Unlike Push-Pull, Single-Ended circuits preserve this most musical of all harmonics. A subtle coating of

warm distortion (an octave above the note you're playing) glazes the entire spectrum with a purring, golden halo of precious nuance. Perfect for individual playing or recording. For a full description of this technology visit [mesaboogie.com](http://mesaboogie.com).

Between the two Lone Stars, you can choose to clip your power at 5, 15, 30, 50 or 100 watts. All this bouncy Class A tone blooms naturally in a trim new 1x12 cab roughly 3/4s the size of its Big Brother. (And

you can afford to pack both these hand-crafted jewels for around the same bling-bling as a one-trick pony from the boutique corral. But don't shop price – compare tone!)

Gigging at the club... rehearsing with the band... recording in the studio... tracking at home... or simply finding inspiration late at night... the finely tuned power sections of the Lone Star Special transcend all these needs – going where no single amp has gone before.

## Available Formats:

- ☛ Head (width 22 3/4")
- ☛ 1x12 Combo (width 22 3/4")
- ☛ 2x12 Combo
- ☛ 4x10 Combo

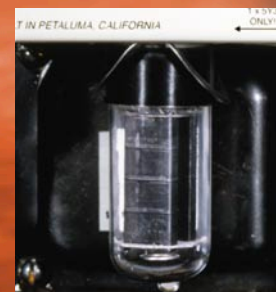
**Multi-Watt™ Channel Assignable Power** offers three choices that may be pre-set for each channel. Push-pull configurations deliver 30 or 15 watts. For 5 watts, the Special switches to Single-Ended. Operation remains Pure Class A at all times.



**Drive Control** Channel 2 CLEAN/DRIVE switch kicks in another triode tube stage for the high gain lead mode or, lets you bypass it entirely for a slightly higher gain clone of Channel 1.



**Rectifier Tracking** automatically selects the 5Y3 tube for 5 and 15 watts. For 30 watts the punchier, bolder silicon diodes are brought on line. For max power, use the Optional 35 Watt speaker jack.



**Channel 2 Voicing Switch** offers three gain/voicings allowing you to tune the response from NORMAL, revealing the natural sound of your guitar, to THICK and THICKER for more vocal quality high gain solo work in the DRIVE MODE.

